

ITINERARY

					MADINAH			MAKKAH							DAYS OF HAJJ								
MON	TUE	WED	THU	FRI	SAT	SUN	MON	TUE	WED	THU	FRI	SAT	SUN	MON	TUE	WED	THU	FRI	SAT	SUN	MON	TUE	WED
19	20	21	22	23	24	25	26	27	28	29	30	31	1	2	3	4	5	6	7	8	9	10	11
MAY	MAY	MAY	MAY	MAY	MAY	MAY	MAY	MAY	MAY	MAY	MAY	MAY	JUN	JUN	JUN	JUN	JUN	JUN	JUN	JUN	JUN	JUN	JUN
21	22	23	24	25	26	27	28	29	1	2	3	4	5	6	7	8	9	10	11	12	13	14	
QADAH	QADAH	QADAH	QADAH	QADAH	QADAH	QADAH	QADAH	QADAH	HJAH	HJAH	HJAH	HJAH	HJAH	HJAH	HJAH	HJAH	HJAH	HJAH	HJAH	HJAH	HJAH	HJAH	

PACKAGE INCLUDES



GROUP FLIGHTS



In case of any discrepancies, the information provided on Nusuk takes precedence over the information presented here. Actual package dates will be determined by the flights.

Package Overview

Guided By Inspired TOURS



Sheikh Mohammed Khan (Main Guide)

Makkah Only: Sheikh Muhammad Ziyad Al Khalidy + Brother Muneer + Sister Ronya

Combined 40 years experience in Hajj

Languages: English / Arabic / Urdu / Hindi / Indonesian / Afrikaans

A5100U-ITAU Package Flights



DEPARTURE FLIGHTS**

Sector	Flight No	Date	Departure	Arrival	Transit	Sector	Flight No	Date	Departure	Arrival
SYD-DOH	QR909	23-May-25	20:45	04:55 +1	2h 25m	DOH-MED	QR1178	24-May-25	07:20	09:40
PER-DOH	QR901	23-May-25	22:45	05:15 +1	2h 5m	DOH-MED	QR1178	24-May-25	07:20	09:40
MEL-DOH	QR905	23-May-25	21:00	04:30 +1	2h 50m	DOH-MED	QR1178	24-May-25	07:20	09:40
BNE-DOH	QR899	23-May-25	22:15	06:00 +1	1h 20m	DOH-MED	QR1178	24-May-25	07:20	09:40
NRT-DOH	QR807	23-May-25	22:30	04:05 +1	7h 20m	DOH-MED	QR1176	24-May-25	11:25	13:45






SPECIAL LUGGAGE ALLOWANCE: 40KG

**Subject to change

Madinah 4 Nights 24-28 May



WAQF OTHMAN HOTEL, MADINAH (STANDARD)

 7 MIN WALK* |  BREAKFAST & DINNER
 WI-FI |  FITNESS CENTER
 DIRECT ACCESS TO HARAM

Situated in the heart of Al-Madinah, this hotel is conveniently positioned near shopping districts and restaurants. Its central location places it just an 8-minute walk from the Prophet's Masjid. Offering practical accommodation, the hotel features ensuite rooms.

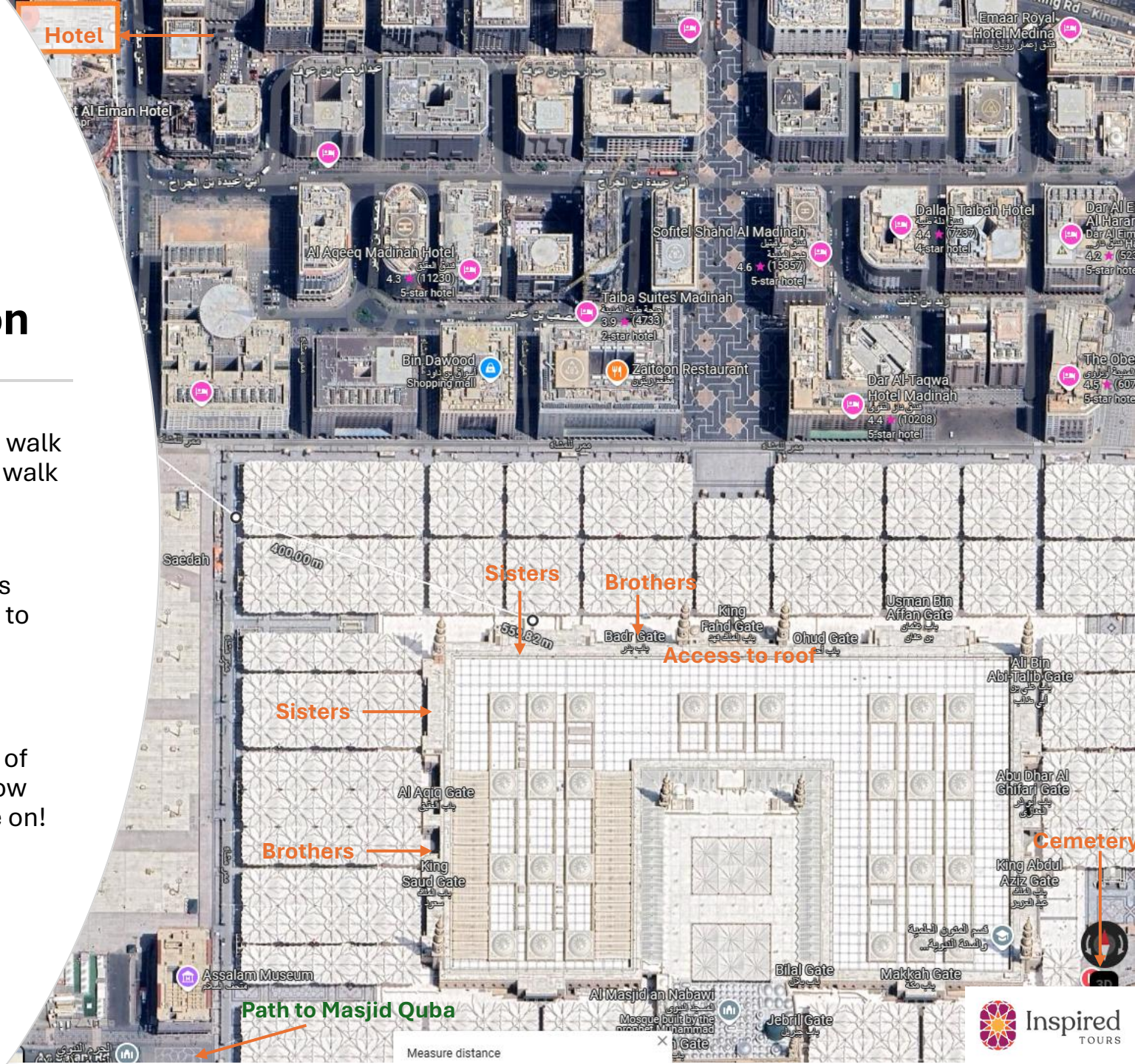
Proposed Itinerary*

- Sat 24 May- Madinah arrival! Give Salaam to the Prophet ﷺ!
 - Sun 25 May- Cemetery Visit (Brothers only)
Group Rawdah Visits Brothers & Sisters
 - Mon 26 May- Walking tours of Madinah, Visit Masjid Quba, Mount Uhud, Date markets
 - Tue 27 May- Optional Museum Visit
 - Wed 28 May- Depart for Umrah
-
- Daily spiritual lessons after Asr including virtues of Madinah, Battle of Uhud and more
 - Quad Share only available

*Itinerary subject to change

Madinah Location

- Approximately 550 metre walk for sisters and 650 metre walk for brothers
- Easy access to landmarks such as Mount Uhud and to leave Madinah given its location
- You are staying at a Waqf of Uthman ibn Affan (r.a), how blessed after all this time on!



Madinah – Makkah Transport

- High Speed Haramain Rail Transfer
- Travel time of 2-2.5 hours
- Big luggage sent by luggage truck in advance
- Coach transfers to and from train station
- Travel in air-conditioned comfort during the heat and preserve energy for your Umrah



A friend (with a different provider) who took a bus few days ago, had to spend more than 12 hours on her journey, passing through at least five checkpoints



I think traveling by train is much more comfortable than by bus, especially before the Hajj days when there are many checkpoints on the road between Madinah and Makkah

Makkah 13 Nights 28 May - 10 June



AL-KISWAH TOWERS HOTEL, MAKKAH (STANDARD)

🏠 15-20MIN WALK* | 🍴 BREAKFAST & DINNER
📶 WI-FI | 🚶 DIRECT ACCESS TO HARAM

Kiswah Towers Hotel is located in the Tayseer district of Makkah, approximately 20 minutes walk from the Haram. This is a large hotel complex which has recently undergone refurbishment, offering a good standard of accommodation. All rooms are ensuite and offer all the necessary amenities.

Proposed Itinerary*

- Wed 28 May- Perform Umrah
- Thu 29 May- Visit revelation museum, Cave Hira, Arafah, Muzdalifah and Mina
- Fri 30 May- Juma in Makkah!
- Sat 31 May- Walking Tour of Makkah
- Sun 1 Jun- Tue 3 Jun Prepare for Hajj
- Wed 4 June-Mon 9 June **DAYS OF HAJJ!**
- Tue 10 June- Depart for home

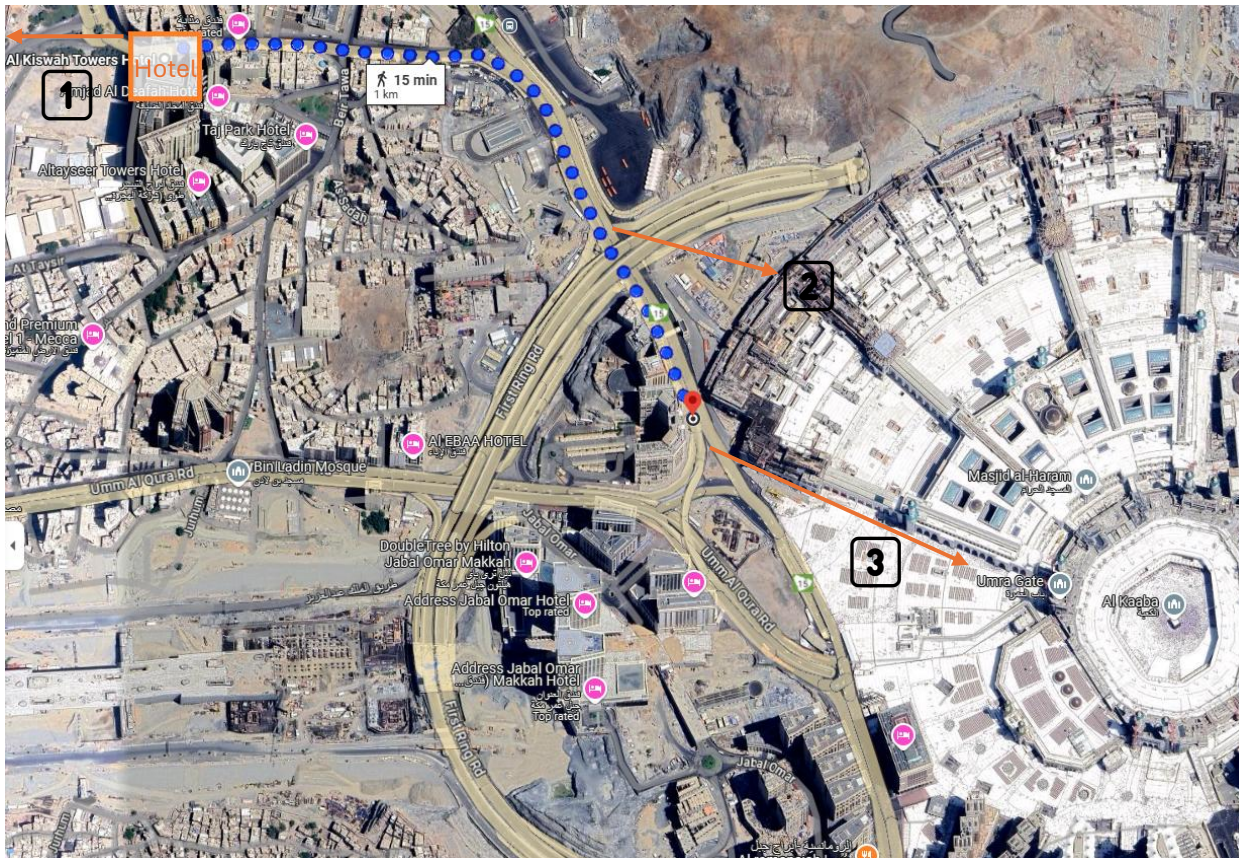
- Daily spiritual lessons after Asr including virtues of Makkah, the story of Prophet Ibrahim (a.s) and more
- Quad Share only available

*Itinerary subject to change

Makkah Location



Makkah Location



- It's very convenient for access to buses to leave Makkah and get to Hajj sites and return, especially on Day 10.
- Provides ease of access to the new expansion area which is ideal during peak periods such as Hajj.
- A much more compelling option than staying in Aziziyah for marginal additional cost, maximise worship in Makkah (whilst still allowing twin and triple share options that aren't available in Aziziyah).

Key

- 1 Access to route for buses to leave/enter Makkah.
- 2 Access to underground air-conditioned walkway to Haram expansion arrive in 10 mins.
- 3 Access to Umrah Gate.

Mina Camp- Al Muaisim

- Tents- Brothers and Sisters separated
- Breakfast, Lunch & Dinner Buffet
- Bus transfers to Hajj sites door to door
- 50-60 minute (4km) walk to Jamarat one way (majority under cover and through tunnels)



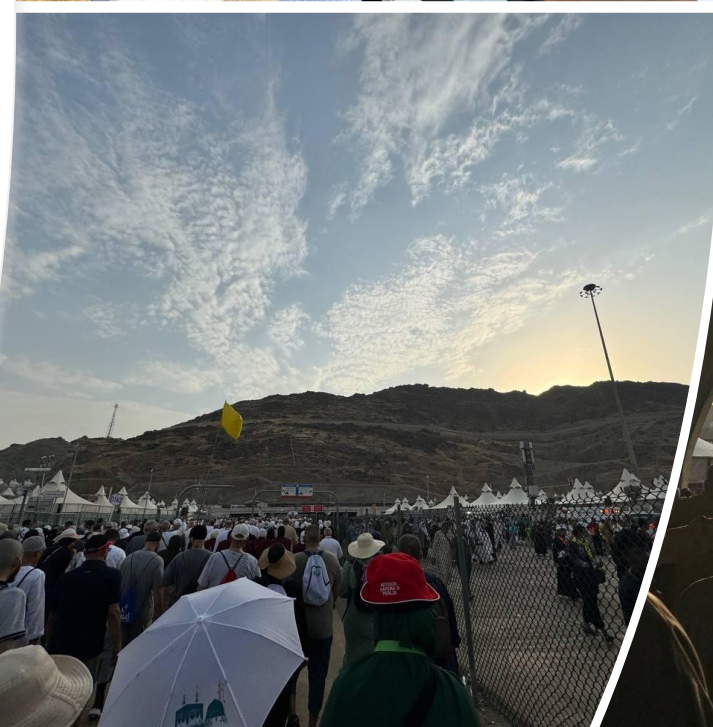
Al Muaisim Location





Arafah / Muzdalifah

Mina Camp- Al Muaisim Walking to Jamarat



A5100U-ITAU Package Flights



RETURN FLIGHTS

Sector	Flight No	Date	Departure	Arrival	Transit	Sector	Flight No	Date	Departure	Arrival
JED-DOH	QR1185	10-Jun-25	04:50	07:10	11h 00m*	DOH-SYD	QR908	10-Jun-25	20:10	17:10 +1
JED-DOH	QR1185	10-Jun-25	04:50	07:10	11h 15m*	DOH-BNE	QR898	10-Jun-25	20:25	17:30 +1
JED-DOH	QR1185	10-Jun-25	04:50	07:10	17h 25m*	DOH-PER	Q9R00	11-Jun-25	02:35	18:40
JED-DOH	QR1185	10-Jun-25	04:50	07:10	11h 05m*	DOH-MEL	QR904	10-Jun-25	20:15	16:45 +1
JED-DOH	QR1191	10-Jun-25	11:30	13:50	6h 20m	DOH-NRT	QR808	10-Jun-25	20:15	12:35 +1

*Hotel provided by airline for transit (subject to Airline policies)

SPECIAL LUGGAGE ALLOWANCE: 40KG + ZAM ZAM

Comparison to last year

(2024 Prices include flights)

Package Code	Category	Shifting	Days	Order	Dates	Madinah	Makkah	Mina Camp	Quad (SAR)	Triple (SAR)	Twin (SAR)
K8000	Standard	Non-Shifting	19 Extended	Makkah First	8 th Jun -26 June	Waqf Usman	Kiswah Towers	Al Muaisim	40,750	43,750	48,750

- Last year 2-20 DH, this year 25DQ-14DH
- Madinah First this year
- Emirates airlines last year, Qatar Airlines this year, however flying in/out during peak season this year on 14th Dhull Hijjah- first flight departing for home

Who is this package ideally suited for?

- First time pilgrims who are looking to maximise their spiritual journey
- Wanting Juma in Madinah & maybe Makkah?!
- Package duration that is extended maximising their duration (20 days including travel time)
- Those who wish to have a comfortable and affordable Hajj
- English, Arabic, Urdu, Hindi, Indonesian speaking pilgrims (all welcome)



What to do to book this package

Make dua and istikhaarah on your choice of package

Look for the code A5100U-ITAU when the package is published on Nusuk

Make sure you favourite this particular package so it displays on your Nusuk dashboard

Ensure you configure this package with your preferred room configuration, choice of flights and save in your cart (we will show you how in this Sunday's webinar in sha Allah)

Top up your e-wallet accordingly based on your configuration

Make dua

Labbayk Allahumma Labbayk!